

INTRODUCTION

CONTENTS

| | | | |
|----------------------------|------|--|------|
| | page | | page |
| GENERAL INFORMATION | | MANUFACTURER PLATE | 2 |
| E-MARK LABEL | 2 | VEHICLE IDENTIFICATION NUMBER | 1 |

GENERAL INFORMATION

VEHICLE IDENTIFICATION NUMBER

The Vehicle Identification Number (VIN) plate is located on the lower windshield fence near the left A-pillar. The VIN contains 17 characters that provide data concerning the vehicle. Refer to the VIN decoding chart to determine the identification of a vehicle.

The Vehicle Identification Number is also imprinted on the:

- Body Code Plate.

- Vehicle Safety Certification Label.
- Frame rail.

To protect the consumer from theft and possible fraud the manufacturer is required to include a Check Digit at the ninth position of the Vehicle Identification Number. The check digit is used by the manufacturer and government agencies to verify the authenticity of the vehicle and official documentation. The formula to use the check digit is not released to the general public.

VEHICLE IDENTIFICATION NUMBER DECODING CHART

| POSITION | INTERPRETATION | CODE = DESCRIPTION |
|------------|-----------------------------|---|
| 1 | Country of Origin | 1 = United States |
| 2 | Make | J = Jeep |
| 3 | Vehicle Type | 4 = MPV |
| 4 | Gross Vehicle Weight Rating | F = 4001-5000 lbs. |
| 5 | Vehicle Line | J = Cherokee 4X4 (LHD) J = Cherokee 4X4 (RHD) EXPORT N = Cherokee 4X4 (RHD) B = Cherokee 4X2 (RHD) T = Cherokee 4X2 (LHD) |
| 6 | Transmission | N = 5 Speed Manual A = 3 Speed Auto B = 4 Speed Auto |
| 7 | Body Style | 7 = 2dr Sport Utility 8 = 4dr Sport Utility |
| 8 | Engine | M = 2.5L Diesel P = 2.5L Gasoline S = 4.0L Gasoline |
| 9 | Check Digit | |
| 10 | Model Year | X = 1999 |
| 11 | Assembly Plant | L = Toledo Assembly#1 |
| 12 thru 17 | Vehicle Build Sequence | |

GENERAL INFORMATION (Continued)

E-MARK LABEL

An E-mark Label (Fig. 1) is located on the rear shut face of the driver's door. The label contains the following information:

- Date of Manufacture
- Month-Day-Hour (MDH)
- Vehicle Identification Number (VIN)
- Country Codes
- Regulation Number
- Regulation Amendment Number
- Approval Number

| | | | | | |
|--|----|---------|-----|----|---------|
| Date of Manufacture: 05-95 MDH: 052915 | | | | | |
| VIN: XXXXXXXXXXXXXXXXXXXX | | | | | |
| E4 | 21 | 0195002 | E11 | 13 | 063098 |
| | 26 | 0195001 | | 14 | 030169 |
| E5 | 10 | 010035 | E11 | 17 | 040212 |
| | 11 | 020011 | | 39 | 00155 |
| | 18 | 010010 | | 44 | 0244038 |
| | 28 | 010016 | | 51 | 011082 |
| | 46 | 010019 | | 79 | 00155 |
| | 85 | 000044 | | | |
| E11 | 12 | 030263 | E11 | 48 | 005003 |

Country Code | Regulation Number | Approval Number | Amendment Number

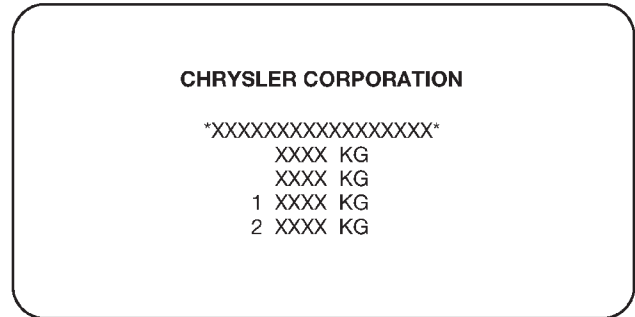
80a47175

Fig. 1 E-Mark Label

MANUFACTURER PLATE

The Manufacturer Plate (Fig. 2) is located in the engine compartment on the radiator closure panel crossmember adjacent to the Body Code Plate. The plate contains five lines of information:

1. Vehicle Identification Number (VIN)
2. Gross Vehicle Mass (GVM)
3. Gross Train Mass (GTM)
4. Gross Front Axle Rating (GFAR)
5. Gross Rear Axle Rating (GRAR)



80a47179

Fig. 2 Manufacturer Plate